

S6R

Output marine auxiliary from 380-635 kW
Output marine propulsion from 440-605 kW



MARINE PROPULSION AND AUXILIARY ENGINES

Check the many excellent reasons for buying a Mitsubishi S6R marine diesel engine.

Economic operation

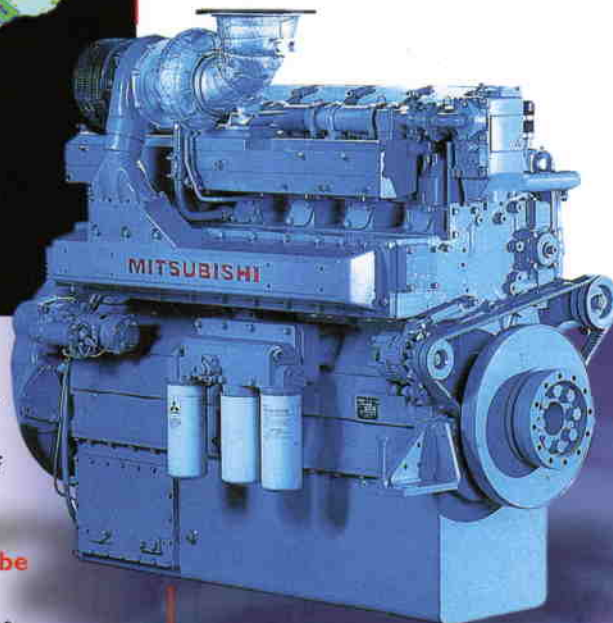
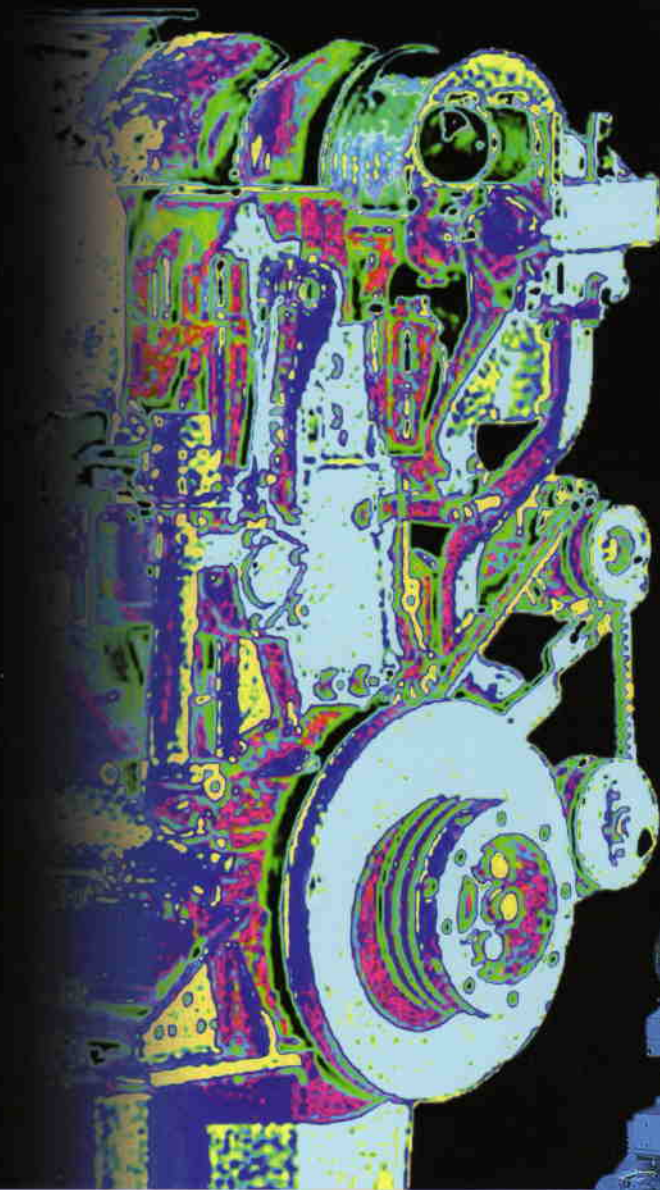
All Mitsubishi engines are designed and built to deliver performance as well as fuel efficiency. From the combustion chamber design to the direct fuel injection technology, from the turbocharger to the advanced cooling system - everything has been perfectly balanced to provide a highly economic operation and optimum fuel consumption across the entire power curve.

Easy maintenance

With Mitsubishi's S6R marine engines, maintenance is very easy. Each cylinder has its own cylinder head and the engine has large inspection covers in the crankcase and oil-pan. Oil and fuel filters are easily accessible too. No auxiliary component requires separate lubrication, whether it's the fuel injection pump, the governor, the waterpump or the turbocharger.

Approved by all major classification societies

At our ISO certified manufacturing facilities, every Mitsubishi S6R diesel engine is built to meet the highest quality standards. All major marine classification societies, as well as the national shipping authorities, recognise the precision of Mitsubishi's manufacturing procedures.



Environmental compatibility

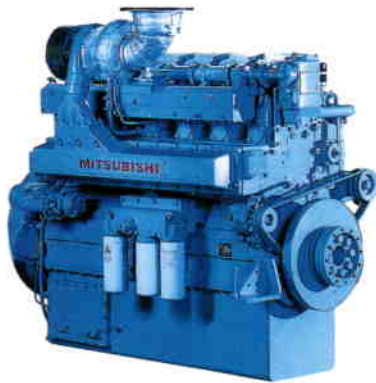
Mitsubishi offers a full line-up of engines that comply with environmental regulations and IMO and CCR emission standards, as certified by Lloyd's Register of Shipping and Germanischer Lloyd.

24 hour service - local support around the globe

A team of specialists is available around the clock, throughout the year, all over the world to ensure that service and maintenance are performed without delay.

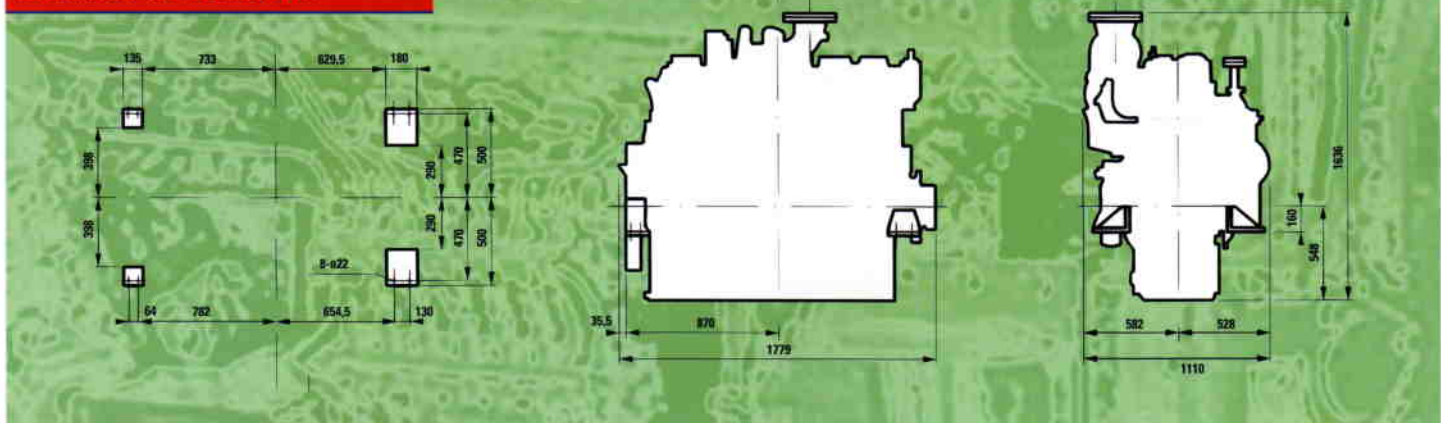


Mitsubishi Marine Engines. **You got the power!**



Model	S6R-MPTA	S6R-MPTK
Type	4-cycle, watercooled, turbocharged diesel engine	
	MPTA with aftercooler, cooled by engine jacket water	
	MPTK with intercooler, cooled by (sea)water of max. 32°C	
Combustion system	direct injection	
Cylinder arrangement	in-line, 6-cylinders	
Bore x stroke	170 x 180 mm.	
Total displacement	24,5 Ltr.	
Compression ratio	14 : 1	
Rotation	SAE standard (Counter-clockwise viewed from flywheel end)	
Starting system	Electric motor, 24 Volt - 7,5 kW or air	
Flywheel	SAE 18	
Flywheelhousing	SAE 0	
Fuel oil	ISO8217, DMX-class	
Lubricating oil	API service grade "CD" or "CF" class	
Dry weight, kg.	2750	2780
Output marine auxiliary	380 kW @ 1200 rpm	420 kW @ 1200 rpm
	515 kW @ 1500 rpm	545 kW @ 1500 rpm
	595 kW @ 1800 rpm	635 kW @ 1800 rpm
Output marine propulsion		
heavy duty	440 kW @ 1600 rpm	470 kW @ 1600 rpm
medium duty	485 kW @ 1650 rpm	520 kW @ 1650 rpm
light duty	570 kW @ 1800 rpm	605 kW @ 1800 rpm

Outside dimensions



Standard Engine Equipment

Fuel system

flexible fuel supply and return hoses, fuel feed pump, change over type fuel filters, fuel injection pump, shielded fuel injection lines, fuel injectors, overflow valve

Lubricating oil system

wet type oil pan with inspection covers, oil pressure pump (gear driven), full-flow lubricating oil filters (change over type), by-pass filter (change over

type), oilcooler with thermostat, piston cooling through oil injectors

Cooling system

fresh waterpump, thermostats with by-pass

24 Volts electric system, earth floated

startermotor, alternator 30 Amps., stop solenoid (ETS)

Inlet- and exhaust system

Mitsubishi turbocharger with vertical

exhaust outlet, air inlet silencer with pre-cleaner, inlet air aftercooler or intercooler, inlet ducts, exhaust manifold (watercooled)

General

hydraulic governor with oil supply system, mounting brackets, flywheel and housing SAE standard, torsional vibration damper, parts catalogue and instruction manual


**DIAMOND DIESELS
(UK) LTD.**


**DIAMOND DIESELS
(UK) LTD.**


UNIT 4, BLACKBURN INDUSTRIAL ESTATE, ENTERPRISE WAY,
SHERBURN IN ELMET, YORKSHIRE LS25 6NA
TEL. 01977 683690 FAX. 01977 683815
E-MAIL: sales@diamonddiesels.co.uk

UNIT 4, BLACKBURN INDUSTRIAL ESTATE, ENTERPRISE WAY,
SHERBURN IN ELMET, YORKSHIRE LS25 6NA
TEL. 01977 683690 FAX. 01977 683815
E-MAIL: sales@diamonddiesels.co.uk